



For adults with moderate to severe Crohn's disease (CD) or ulcerative colitis (UC)

TAKE THE NEXT STEP

THIS COULD BE THE BEGINNING OF YOUR PATH TO LASTING REMISSION

IN BOTH THE CD AND UC STUDIES, MANY PATIENTS ACHIEVED CLINICAL REMISSION AT 1 YEAR WITH STELARA®. PLEASE SEE SUPPORTING DATA WITHIN.

CD



UC

STELARA® is a prescription medicine used to treat adults 18 years and older with moderately to severely active Crohn's disease or ulcerative colitis.

SELECTED IMPORTANT SAFETY INFORMATION

STELARA® is not for everyone; only your doctor can decide if it's right for you. STELARA® is a prescription medicine that affects your immune system. It can increase your chances of having serious side effects including serious infections, cancer, serious allergic reactions, lung inflammation, and a rare condition— posterior reversible encephalopathy syndrome. Talk to your doctor if you need a vaccine. **Please read the [Important Safety Information](#) on pages 10-11 and the [Medication Guide](#) for STELARA® to learn more about these and other risks for STELARA®. Discuss any questions you have with your doctor.**

Johnson & Johnson



For adults with moderate
to severe CD or UC.

CHOOSE TO MOVE FORWARD WITH STELARA®

Your treatment journey is all your own, but you don't have to go on it alone. If you and your doctor decide STELARA® is right for you, you'll have their help and our resources to guide you along the way. Keep reading to learn more about results and how STELARA® can help.



READY TO TAKE THE NEXT STEP TOWARD SYMPTOM RELIEF?

In studies, patients experienced relief at 6 weeks for CD and 8 weeks for UC.



AFTER ONLY 1 STARTER INFUSION



INJECTIONS EVERY 2 MONTHS

STELARA® is given by one IV infusion followed by injections every 8 weeks.



START YOUR PATH HERE FOR A CHANCE AT LASTING REMISSION

Studies showed remission from CD and UC at 1 year.

SELECTED IMPORTANT SAFETY INFORMATION

STELARA® is not for everyone; only your doctor can decide if it's right for you. STELARA® is a prescription medicine that affects your immune system. It can increase your chances of having serious side effects including serious infections, cancer, serious allergic reactions, lung inflammation, and a rare condition— posterior reversible encephalopathy syndrome. Talk to your doctor if you need a vaccine. **Please read the [Important Safety Information](#) on pages 10-11 and the [Medication Guide](#) for STELARA® to learn more about these and other risks for STELARA®. Discuss any questions you have with your doctor.**



For adults with moderate to severe **CD**.

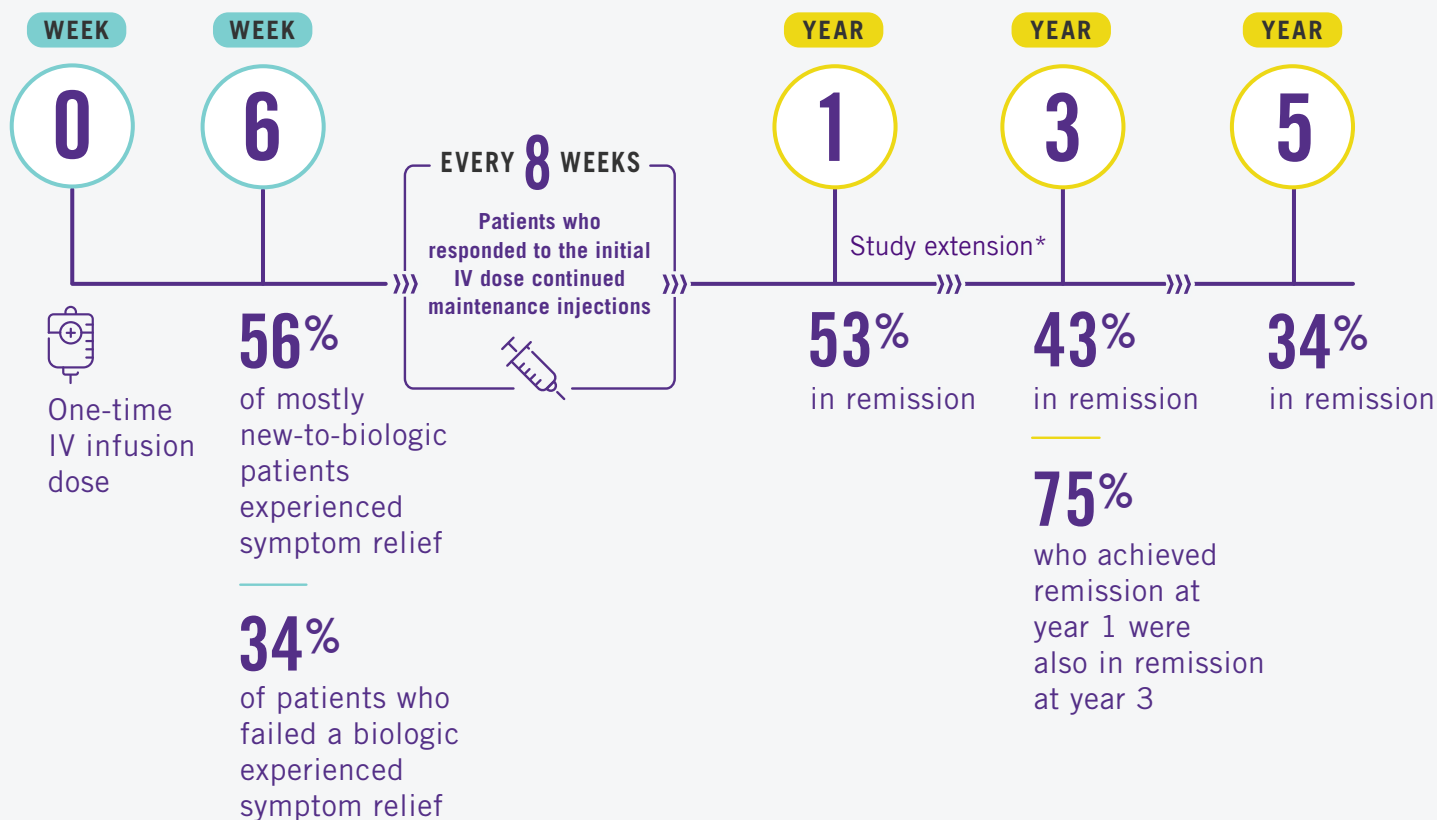
Clinical trials included patients who failed or were intolerant to other medications, including a biologic, prior to STELARA® (ustekinumab).



RAPID RELIEF: WHEN COULD I FEEL BETTER?



LASTING REMISSION: FOR HOW LONG COULD I FEEL BETTER?



*After 1 year, patients and healthcare providers knew that STELARA® was being used. This may have increased results. Individual results may vary. STELARA® is not for everyone. Only you and your doctor can decide if STELARA® is right for you.

SELECTED IMPORTANT SAFETY INFORMATION

STELARA® is not for everyone; only your doctor can decide if it's right for you. STELARA® is a prescription medicine that affects your immune system. It can increase your chances of having serious side effects including serious infections, cancer, serious allergic reactions, lung inflammation, and a rare condition—posterior reversible encephalopathy syndrome. Talk to your doctor if you need a vaccine. **Please read the [Important Safety Information](#) on pages 10-11 and the [Medication Guide](#) for STELARA® to learn more about these and other risks for STELARA®. Discuss any questions you have with your doctor.**

UC

For adults with moderate to severe **UC**.

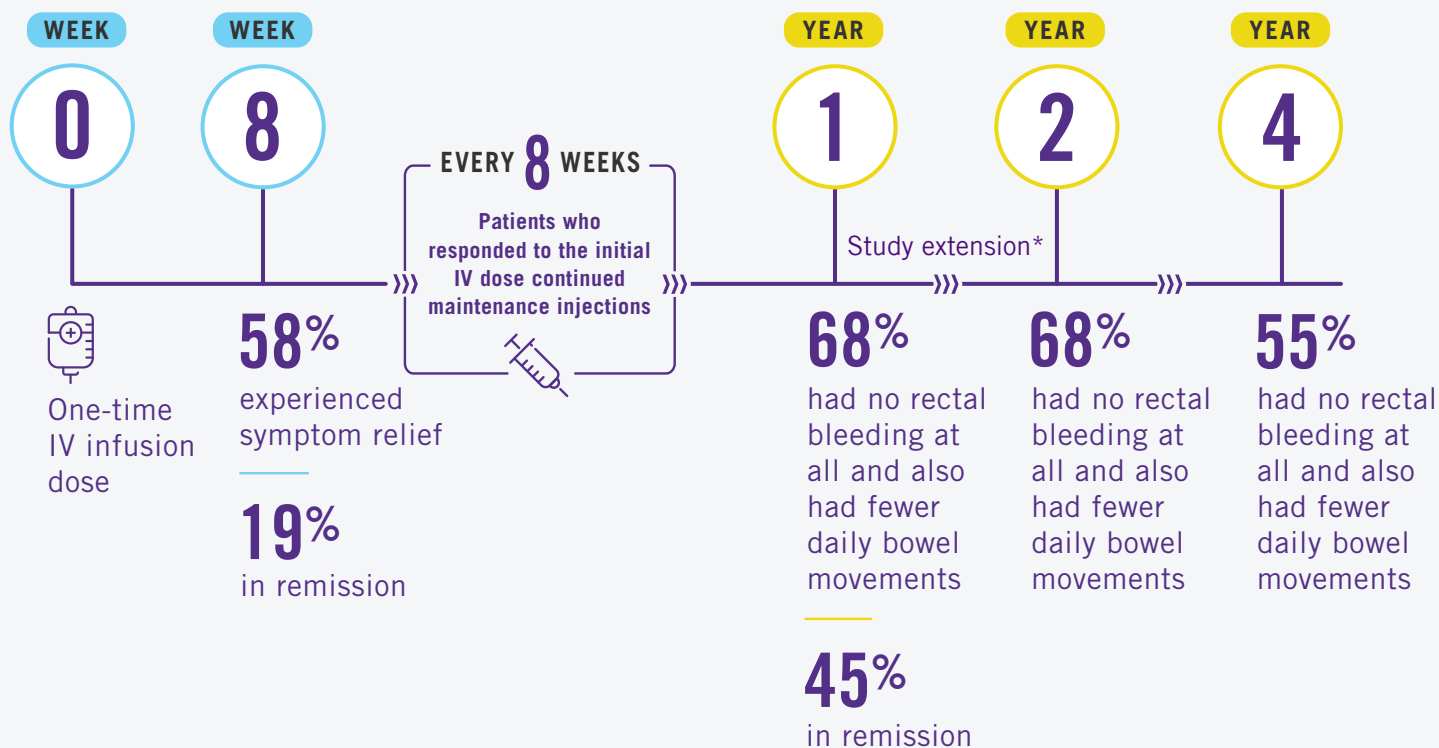
Clinical trials included patients who failed or were intolerant to other medications, including a biologic, prior to STELARA® (ustekinumab).



RAPID RELIEF: WHEN COULD I FEEL BETTER?



LASTING REMISSION: FOR HOW LONG COULD I FEEL BETTER?



*After 1 year, patients and healthcare providers knew that STELARA® was being used. This may have increased results. Individual results may vary. STELARA® is not for everyone. Only you and your doctor can decide if STELARA® is right for you.

SELECTED IMPORTANT SAFETY INFORMATION

STELARA® is not for everyone; only your doctor can decide if it's right for you. STELARA® is a prescription medicine that affects your immune system. It can increase your chances of having serious side effects including serious infections, cancer, serious allergic reactions, lung inflammation, and a rare condition—posterior reversible encephalopathy syndrome. Talk to your doctor if you need a vaccine. **Please read the [Important Safety Information](#) on pages 10-11 and the [Medication Guide](#) for STELARA® to learn more about these and other risks for STELARA®. Discuss any questions you have with your doctor.**

CD+UC DOSING

For adults with moderate to severe CD or UC



Start with an IV infusion
ONE TIME

STELARA® treatment starts with a one-time intravenous (IV) infusion through a vein in your arm that provides the amount of medication based on your body weight and is administered by a medical professional in a comfortable setting. It takes at least 1 hour to receive the full dose of medicine.



Keep going with
maintenance injections
EVERY 2 MONTHS

After the one-time IV infusion, you will receive STELARA® as an injection under the skin (subcutaneous injection) every 8 weeks.

STELARA® is intended for use under the guidance and supervision of your doctor. If your doctor decides that you or a caregiver may give your injections of STELARA® at home, you should receive training on the right way to prepare and inject STELARA®.



After a 1-time infusion, you receive a sub-q injection every 8 weeks. Now, with STELARA®, my symptoms are under control.

–Terrie, STELARA® CD patient

OVERVIEW OF THE SELF-INJECTION PROCESS

▶ SCAN



▶ VISIT
[STELARAinfo.com](https://www.stelara.com/STELARAinfo.com)



Once you and your doctor have decided that STELARA® is right for you, STELARA withMe is with you on your treatment journey. To learn more about the STELARA withMe patient support program and how to enroll, see page 8 of this brochure.

SELECTED IMPORTANT SAFETY INFORMATION

STELARA® is not for everyone; only your doctor can decide if it's right for you. STELARA® is a prescription medicine that affects your immune system. It can increase your chances of having serious side effects including serious infections, cancer, serious allergic reactions, lung inflammation, and a rare condition— posterior reversible encephalopathy syndrome. Talk to your doctor if you need a vaccine. **Please read the [Important Safety Information](#) on pages 10-11 and the [Medication Guide](#) for STELARA® to learn more about these and other risks for STELARA®. Discuss any questions you have with your doctor.**

THE STELARA® DOSING DIFFERENCE

FIRST 52 WEEKS OF THERAPY—AFTER STARTER DOSES

STELARA® (ustekinumab)

6

INJECTIONS

One 90 mg injection
every 8 weeks

AFTER **1** STARTER IV INFUSION

IV dosing is based on patient's weight

CD: STELARA® is a prescription medicine used to treat adults 18 years and older with moderately to severely active Crohn's disease.

UC: STELARA® is a prescription medicine used to treat adults 18 years and older with moderately to severely active ulcerative colitis.

HUMIRA®* (adalimumab)

25

INJECTIONS

One 40 mg injection
every other week

AFTER **3** INJECTIONS

2 injections of 80 mg on day 1, then 1 injection of 80 mg on day 15. Dosing with citrate-free HUMIRA®.*

CD: HUMIRA® is a prescription medicine used to treat moderate to severe Crohn's disease in adults.

UC: HUMIRA® is a prescription medicine used to treat moderate to severe ulcerative colitis in adults. It is not known if HUMIRA® is effective in people who stopped responding to or could not tolerate TNF-blocker medicines.

While these factors are important, there are additional considerations for selecting treatment. Please talk to your doctor about treatment options and what might be right for you. This presentation is not intended to compare the safety and effectiveness of these treatments. Please refer to each product's full Prescribing Information for recommended dosing and administration.

*Indicated trademark is registered trademark of its respective owner.

SELECTED IMPORTANT SAFETY INFORMATION

STELARA® is not for everyone; only your doctor can decide if it's right for you. STELARA® is a prescription medicine that affects your immune system. It can increase your chances of having serious side effects including serious infections, cancer, serious allergic reactions, lung inflammation, and a rare condition—posterior reversible encephalopathy syndrome. Talk to your doctor if you need a vaccine. Please read the [Important Safety Information](#) on pages 10-11 and the [Medication Guide](#) for STELARA® to learn more about these and other risks for STELARA®. Discuss any questions you have with your doctor.

THE LEGACY OF STELARA®

For adults with moderate to severe CD or UC



Thousands of patients have been where you are—at the beginning of their treatment journey with STELARA®. In fact, every person treated with STELARA® becomes a part of its legacy.



500,000+ PATIENTS

are estimated to have been treated with STELARA® for Crohn's disease and other indications in the US*



20+ YEARS

of combined clinical research and 10+ years on the market across indications



140,000+ PATIENTS

are estimated to have been treated with STELARA® for Crohn's disease and ulcerative colitis in the US†



*This is based on information licensed from IQVIA™: LAAD claims, NPA, DDD for the period 2009-2021 reflecting estimates of real-world activity and based on custom methodologies developed by Johnson & Johnson. All rights reserved.

†The estimated number of patients treated with STELARA® in the United States is 121,000+ for CD and 22,000+ for UC.

SELECTED IMPORTANT SAFETY INFORMATION

STELARA® is not for everyone; only your doctor can decide if it's right for you. STELARA® is a prescription medicine that affects your immune system. It can increase your chances of having serious side effects including serious infections, cancer, serious allergic reactions, lung inflammation, and a rare condition—posterior reversible encephalopathy syndrome. Talk to your doctor if you need a vaccine. **Please read the [Important Safety Information](#) on pages 10-11 and the [Medication Guide](#) for STELARA® to learn more about these and other risks for STELARA®. Discuss any questions you have with your doctor.**

Stelara withMe



DEDICATED HELP— EVERY STEP OF THE WAY

Once you and your doctor have decided STELARA® is right for you, STELARA withMe will help you find the resources you may need to get started and stay on track.



Nurse Navigator

A registered nurse* who is just a phone call away



Treatment Support

Helps provide infusion support and self-injection training



Prescription & Cost Support

Teaches how to fill your prescription and look for savings options

*Nurse Navigators do not provide medical advice. Please consult your doctor for any questions you have about your disease or therapy.

STELARA withMe is limited to education about STELARA®, its administration, and/or the condition it treats. It is not intended to provide medical advice, replace a treatment plan you receive from your doctor or nurse, or serve as a reason for you to start or stay on treatment.

Eligibility for program components may vary.

SELECTED IMPORTANT SAFETY INFORMATION

STELARA® is not for everyone; only your doctor can decide if it's right for you. STELARA® is a prescription medicine that affects your immune system. It can increase your chances of having serious side effects including serious infections, cancer, serious allergic reactions, lung inflammation, and a rare condition— posterior reversible encephalopathy syndrome. Talk to your doctor if you need a vaccine. **Please read the [Important Safety Information](#) on pages 10-11 and the [Medication Guide](#) for STELARA® to learn more about these and other risks for STELARA®. Discuss any questions you have with your doctor.**

TAKE THE NEXT STEP:

STELARA withMe SAVINGS PROGRAM

IF YOU USE COMMERCIAL OR PRIVATE HEALTH
INSURANCE TO PAY FOR YOUR MEDICATION

ELIGIBLE PATIENTS PAY \$5 PER DOSE

- ▶ Eligible patients using commercial or private insurance can save on out-of-pocket medication costs for STELARA®
- ▶ Not valid for patients using Medicare, Medicaid, or other government-funded programs to pay for their medication
- ▶ Maximum program benefit per calendar year shall apply
- ▶ Terms expire at the end of each calendar year and may change
- ▶ Program does not cover the cost to give you your treatment
- ▶ See program requirements at [STELARAWithMeSavings.com](https://www.stelara.com/withme/savings)

TO ENROLL IN STELARA withMe

▶ SCAN



▶ VISIT

[STELARAinfo.com](https://www.stelara.com/withme/info)

▶ CALL

844-4withMe (844-494-8463)

Monday-Friday 8:00 AM - 8:00 PM ET

ALLY'S LAW



For adults with moderate to severe CD or UC

BATHROOM ACCESS WHEN IT'S MOST URGENT

In 2005, the Restroom Access Act—also known as Ally's Law—was passed. It states that retail stores that do not have a public restroom must provide access to their employee restroom to any person with a medical condition, including Crohn's disease and ulcerative colitis.

As of March 2023, it has been passed into law in 20 states and the District of Columbia. Included here is a restroom access card that will assert your legal right to a bathroom in those states.

States that enforce Ally's Law:

California	Louisiana	Ohio
Colorado	Maine	Oregon
Connecticut	Maryland	Tennessee
Delaware	Massachusetts	Texas
District of Columbia	Michigan	Washington
Illinois	Minnesota	Wisconsin
Kentucky	New Hampshire	
	New York	

Restroom Access, Crohn's & Colitis Foundation:
Accessed June 12, 2024. <https://www.crohnscolitisfoundation.org/get-involved/be-an-advocate/restroom-access>



**MEDICAL
ALERT CARD**



Immediate Restroom Access Required

This cardholder is suffering from the symptoms of Crohn's disease or ulcerative colitis—chronic inflammatory bowel diseases. They are physically unable to hold it in and **need a restroom immediately.**

The Restroom Access Act of 2005 requires that you make your facilities available to them. Thank you for your understanding.

janssen Immunology

SELECTED IMPORTANT SAFETY INFORMATION

STELARA® is not for everyone; only your doctor can decide if it's right for you. STELARA® is a prescription medicine that affects your immune system. It can increase your chances of having serious side effects including serious infections, cancer, serious allergic reactions, lung inflammation, and a rare condition—posterior reversible encephalopathy syndrome. Talk to your doctor if you need a vaccine. **Please read the [Important Safety Information](#) on pages 10-11 and the [Medication Guide](#) for STELARA® to learn more about these and other risks for STELARA®. Discuss any questions you have with your doctor.**

IMPORTANT SAFETY INFORMATION

WHAT IS STELARA® (ustekinumab)?

STELARA® is a prescription medicine used to treat:

- adults 18 years and older with moderately to severely active Crohn's disease.
- adults 18 years and older with moderately to severely active ulcerative colitis.

IMPORTANT SAFETY INFORMATION

STELARA® is a prescription medicine that affects your immune system. STELARA® can increase your chance of having serious side effects including:

Serious Infections

STELARA® may lower your ability to fight infections and may increase your risk of infections. While taking STELARA®, some people have serious infections, which may require hospitalization, including tuberculosis (TB), and infections caused by bacteria, fungi, or viruses.

- Your doctor should check you for TB before starting STELARA® and watch you closely for signs and symptoms of TB during treatment with STELARA®.
- If your doctor feels that you are at risk for TB, you may be treated for TB before and during treatment with STELARA®.

You should not start taking STELARA® if you have any kind of infection unless your doctor says it is okay.

Before starting STELARA®, tell your doctor if you:

- think you have an infection or have symptoms of an infection such as:
 - fever, sweats, or chills
 - muscle aches
 - cough
 - shortness of breath
 - blood in phlegm
 - weight loss
 - warm, red, or painful skin or sores on your body
 - diarrhea or stomach pain
 - burning when you urinate or urinate more often than normal
 - feel very tired
- are being treated for an infection or have any open cuts.
- get a lot of infections or have infections that keep coming back.
- have TB, or have been in close contact with someone with TB.

After starting STELARA®, call your doctor right away if you have any symptoms of an infection (see above). These may be signs of infections such as chest infections, or skin infections or shingles that could have serious complications. STELARA® can make you more likely to get infections or make an infection that you have worse. People who have a genetic problem where the body does not make any of the proteins interleukin 12 (IL-12) and interleukin 23 (IL-23) are at a higher risk for certain serious infections that can spread throughout the body and cause death. People who take STELARA® may also be more likely to get these infections.

Cancers

STELARA® may decrease the activity of your immune system and increase your risk for certain types of cancer. Tell your doctor if you have ever had any type of cancer. Some people who had risk factors for skin cancer developed certain types of skin cancers while receiving STELARA®. Tell your doctor if you have any new skin growths.

Posterior Reversible Encephalopathy Syndrome (PRES)

PRES is a rare condition that affects the brain and can cause death. The cause of PRES is not known. If PRES is found early and treated, most people recover. Tell your doctor right away if you have any new or worsening medical problems including: headache, seizures, confusion, and vision problems.

Serious Allergic Reactions

Serious allergic reactions can occur. Stop using STELARA® and get medical help right away if you have any symptoms of a serious allergic reaction such as: feeling faint, swelling of your face, eyelids, tongue, or throat, chest tightness, or skin rash.

IMPORTANT SAFETY INFORMATION (continued)

Lung Inflammation

Cases of lung inflammation have happened in some people who receive STELARA® and may be serious. These lung problems may need to be treated in a hospital. Tell your doctor right away if you develop shortness of breath or a cough that doesn't go away during treatment with STELARA®.

Before receiving STELARA®, tell your doctor about all of your medical conditions, including if you:

- have any of the conditions or symptoms listed above for serious infections, cancers, or PRES.
- ever had an allergic reaction to STELARA® or any of its ingredients. Ask your doctor if you are not sure.
- are allergic to latex. The needle cover on the prefilled syringe contains latex.
- have recently received or are scheduled to receive an immunization (vaccine). People who take STELARA® should not receive live vaccines. Tell your doctor if anyone in your house needs a live vaccine. The viruses used in some types of live vaccines can spread to people with a weakened immune system, and can cause serious problems. **You should not receive the BCG vaccine during the one year before receiving STELARA® or one year after you stop receiving STELARA®.**
- have any new or changing lesions within psoriasis areas or on normal skin.
- are receiving or have received allergy shots, especially for serious allergic reactions.
- receive or have received phototherapy for your psoriasis.
- are pregnant or plan to become pregnant. It is not known if STELARA® can harm your unborn baby. You and your doctor should decide if you will receive STELARA®.
- received STELARA® while you were pregnant. It is important that you tell your baby's healthcare provider before any vaccinations are given to your baby.
- are breastfeeding or plan to breastfeed. STELARA® can pass into your breast milk.
- talk to your doctor about the best way to feed your baby if you receive STELARA®.

Tell your doctor about all the medicines you take, including prescription and over-the-counter medicines, vitamins, and herbal supplements. Know the medicines you take. Keep a list of them to show your doctor and pharmacist when you get a new medicine.

When prescribed STELARA®:

- Use STELARA® exactly as your doctor tells you to.
- STELARA® is intended for use under the guidance and supervision of your doctor. In children 6 years and older, it is recommended that STELARA® be administered by a healthcare provider. If your doctor decides that you or a caregiver may give your injections of STELARA® at home, you should receive training on the right way to prepare and inject STELARA®. Your doctor will determine the right dose of STELARA® for you, the amount for each injection, and how often you should receive it. Do not try to inject STELARA® yourself until you or your caregiver have been shown how to inject STELARA® by your doctor or nurse.

Common side effects of STELARA® include: nasal congestion, sore throat, and runny nose, upper respiratory infections, fever, headache, tiredness, itching, nausea and vomiting, redness at the injection site, vaginal yeast infections, urinary tract infections, sinus infection, bronchitis, diarrhea, stomach pain, and joint pain. These are not all of the possible side effects with STELARA®. Tell your doctor about any side effect that you experience. Ask your doctor or pharmacist for more information.

Please click to read the full [Prescribing Information](#) and [Medication Guide](#) for STELARA® and discuss any questions you have with your doctor.

You are encouraged to report negative side effects of prescription drugs to the FDA. Visit www.fda.gov/medwatch or call 1-800-FDA-1088.



For adults with moderate to severe CD or UC

LASTING REMISSION CAN START WITH STELARA®

IN BOTH THE CD AND UC STUDIES, MANY PATIENTS ACHIEVED CLINICAL REMISSION
AT 1 YEAR WITH STELARA®. PLEASE SEE SUPPORTING DATA WITHIN.

TALK TO YOUR DOCTOR TO FIND OUT IF STELARA® IS RIGHT FOR YOU

SELECTED IMPORTANT SAFETY INFORMATION

STELARA® is not for everyone; only your doctor can decide if it's right for you. STELARA® is a prescription medicine that affects your immune system. It can increase your chances of having serious side effects including serious infections, cancer, serious allergic reactions, lung inflammation, and a rare condition— posterior reversible encephalopathy syndrome. Talk to your doctor if you need a vaccine. **Please read the [Important Safety Information](#) on pages 10-11 and the [Medication Guide](#) for STELARA® to learn more about these and other risks for STELARA®. Discuss any questions you have with your doctor.**